



USB – RS485 Modbus Converter

P/N 242411/00 and 242411/01

Installation Manual

Important Notice

All rights reserved. No part of this document may be reproduced, stored on the Internet, or transmitted in any form without written permission from HAMILTON Bonaduz AG.

The contents of this manual are subject to change without notice. Technical changes reserved.

All efforts have been made to ensure the accuracy of the contents of this manual. However, should any errors be detected, HAMILTON Bonaduz AG would greatly appreciate being informed of them.

The above notwithstanding, HAMILTON Bonaduz AG can assume no responsibility for any errors in this manual or their consequences.

Copyright © 2010 HAMILTON Bonaduz AG, Switzerland.

Rev.	Revision Date	Change Description
00	May 2010	Initial version

Table of Contents

1	OVERVIEW.....	4
1.1	INTRODUCTION.....	4
1.2	OPERATING SYSTEM REQUIREMENTS.....	4
2	INSTALLATION OF THE USB-RS485 MODBUS CONVERTER	4
2.1	DOWNLOAD THE USB-RS485 MODBUS CONVERTER DRIVER	4
2.2	INSTALLATION OF THE USB-RS485 MODBUS CONVERTER DRIVER	5
2.2.1	Windows XP.....	5
2.2.2	Windows Vista.....	12
2.2.3	Windows 7	17
2.3	UNINSTALL USB-RS485 MODBUS CONVERTER DRIVER AND UNBLOCK COM-PORT.....	23

1 Overview

1.1 Introduction

The ARC Sensor Configurator is a PC application for calibration and configuration of ARC Sensors and VISIFERM DO Sensors.

For PC-to-sensor communication, a RS485 interface for Modbus is needed. HAMILTON recommends to use the USB-RS485 Modbus converter (P/N: 242411).

This document guides you through the installation of the USB-RS485 Modbus converter recommended by HAMILTON.

1.2 Operating System Requirements

The USB-RS485 Modbus converter driver is tested with Windows XP, Windows Vista and Windows 7.

2 Installation of the USB-RS485 Modbus Converter



Attention:

Do not plug the converter into the computer's USB port until the tasks described in chapter 2.1 are completed.

2.1 Download the USB-RS485 Modbus Converter Driver

1. Go to URL <http://www.hamiltoncompany.com> and select "Lab & Process Sensors" – "Downloads".
2. Download "PN242411-01_USB-RS485-Converter-Driver.zip".
3. In the window "File Download" click "Save" and select a directory on your computer where you want to download and save the file. After the download is completed, click "Close".
4. Unpack the downloaded file into an empty directory. If you are using Windows Explorer to open and extract the downloaded file, double-click on the ZIP-file, select "File" – "Extract All..." and follow the "Extraction Wizard" to extract and save all included files and subdirectories into the desired directory.

2.2 Installation of the USB-RS485 Modbus Converter Driver



Attention:

Make sure you have unpacked the downloaded driver with all included files and subdirectories into a selected directory. Remember the name of this directory.

For the installation, administrator rights are needed on your computer.

2.2.1 Windows XP



Attention:

The installation is divided in two steps:

Step 1: Wizard-guided installation of the driver for the converter.

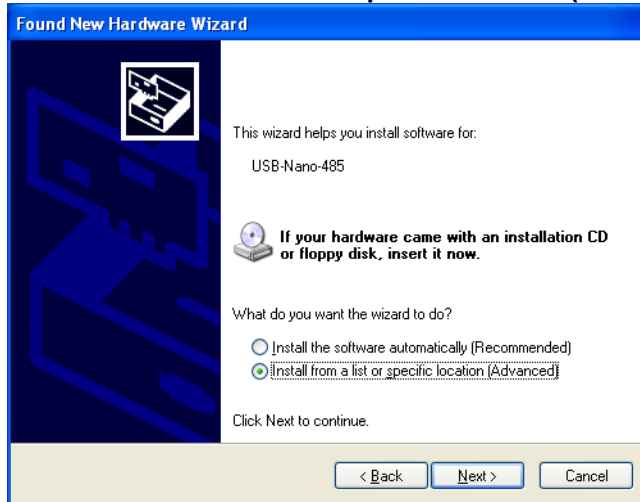
Step 2: Wizard-guided installation of the driver for the serial port.

The installation will be repeated every time you plug in a new converter.

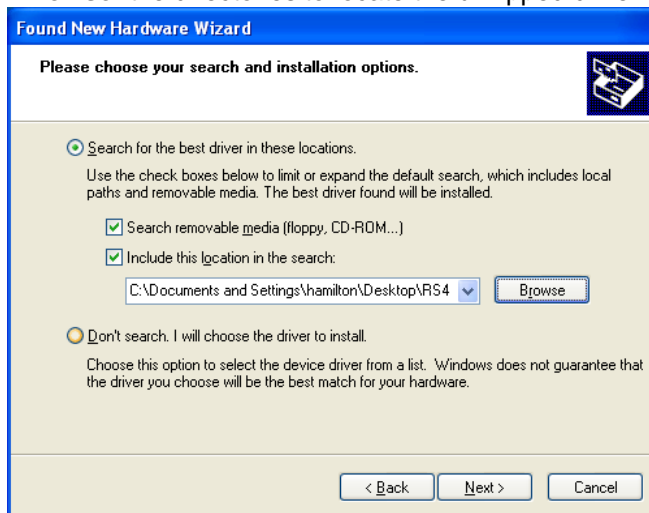
1. Plug the converter into the computer's USB port.
2. After a few seconds the wizard for installing new hardware pops up. Select **"Yes, this time only"** and click **"Next"**.



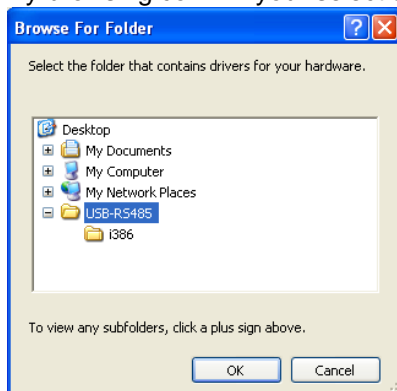
3. Select **“Install from a list or specific location (Advanced)”** and click **“Next”**.



4. **“Browse”** the directories to locate the unzipped driver and go on with **“Next”**.



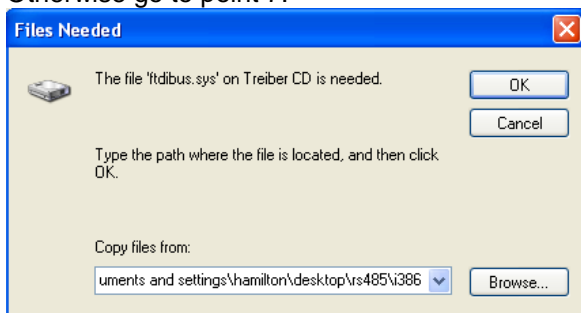
By browsing confirm your selection with **“OK”**.



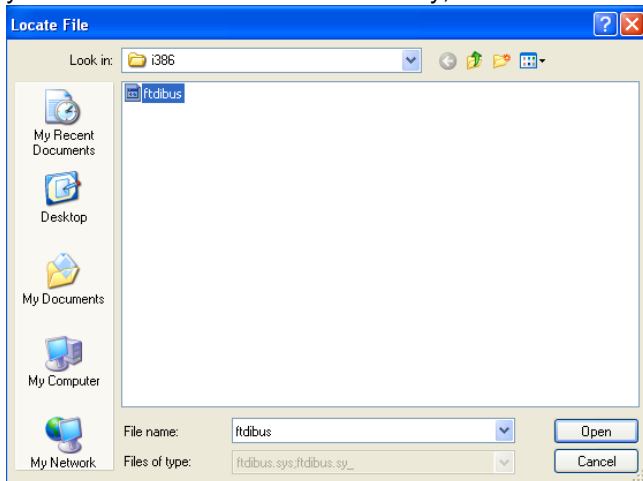
5. If a message appears about concerning **“Windows Logo testing”**, press **“Continue Anyway”**. The installation finishes automatically.



6. If Windows asks you to locate the file **“ftdibus.sys”**, select it with the button **“Browse”**. Otherwise go to point 7.



Change into the subdirectory **“i386”** for Intel-processors or **“amd64”** for AMD-processors of your USB-RS485-converter-directory, select the file and confirm with the button **“Open”**.



Click **“OK”** in the window **“Files Needed”**.

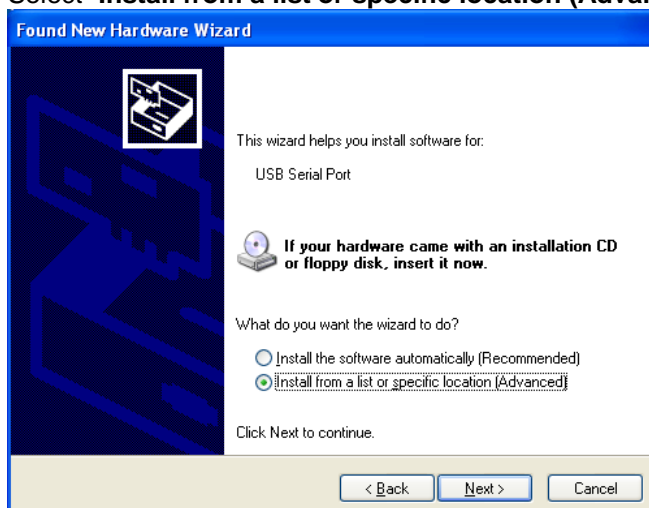
7. The driver for the converter is now successfully installed on your computer. Click **“Finish”**.



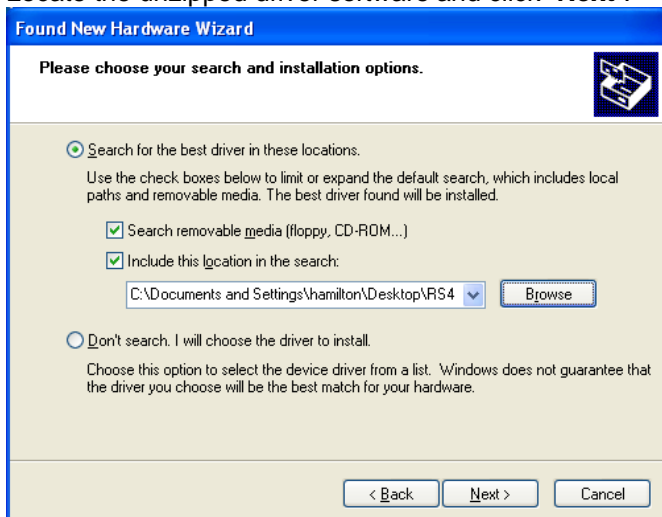
8. After a few seconds the wizard for installing new hardware appears again. This time the driver for the serial port is installed. Select **“Yes, this time only”** and click **“Next”**.



9. Select **“Install from a list or specific location (Advanced)”** and click **“Next”**.



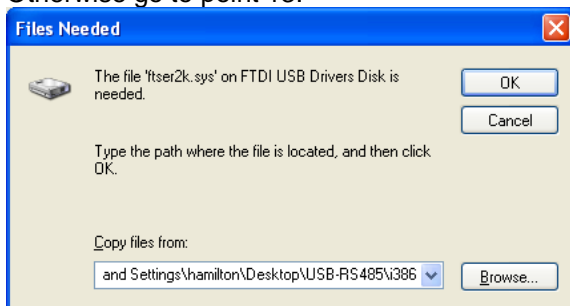
10. Locate the unzipped driver software and click **“Next”**.



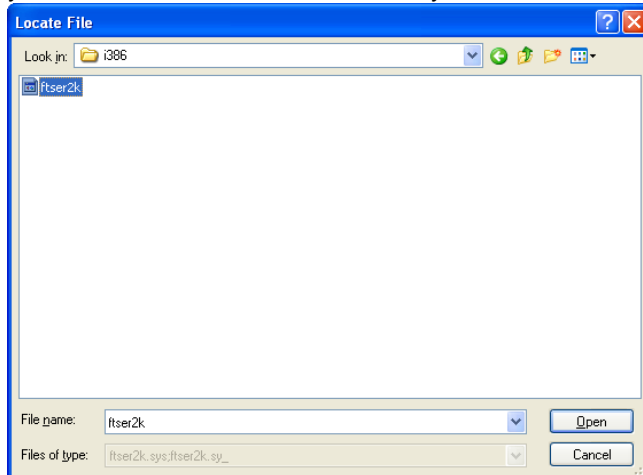
11. If a message appears concerning **“Windows Logo testing”**, press **“Continue Anyway”**. Now the installation finishes automatically.



12. If Windows asks you to locate the file **“ftser2k.sys”**, select it with the button **“Browse”**. Otherwise go to point 13.

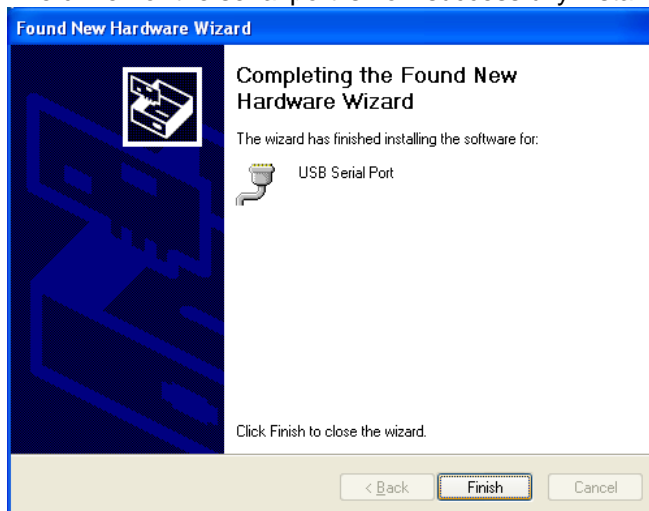


Change into the subdirectory “**i386**” for Intel-processors or “**amd64**” for AMD-processors of your USB-RS485-converter-directory, select the file and confirm with the button “**Open**”.

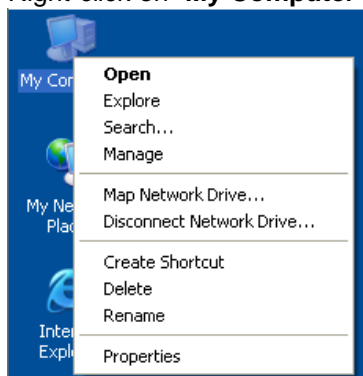


Click “**OK**” in the window “**Files Needed**”.

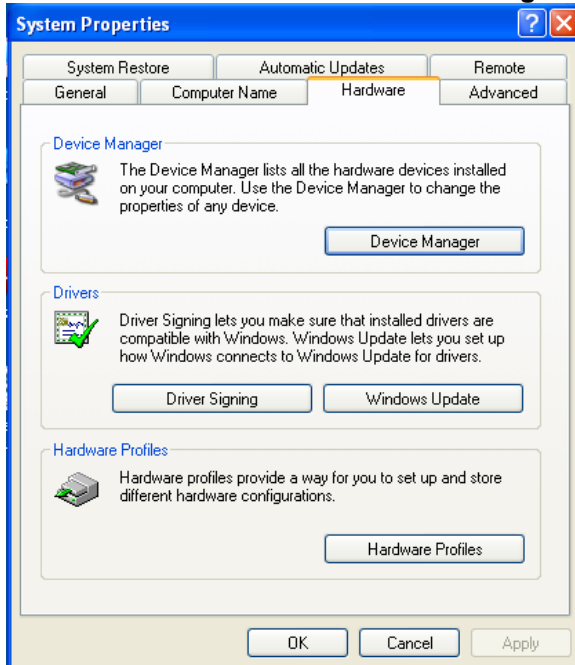
13. The driver for the serial port is now successfully installed on your computer. Click “**Finish**”.



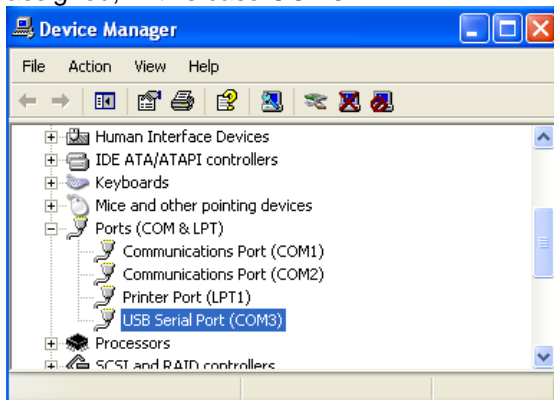
14. Now check the COM-port that has been assigned to the converter. Right-click on “**My Computer**” and select “**Properties**”.



15. In the tab "**Hardware**" select "**Device Manager**".



16. "**Ports**" shows a new item named "**USB Serial Port (COMx)**". x indicates the COM-port assigned, in this case COM3.



"**Universal Serial Bus controllers**" shows a new item named "**USB-Nano-485**". If both items "**USB Serial Port**" and "**USB-Nano-485**" appear without any indication of failure, the installation was complete and successful.



17. The USB-RS485 Modbus converter will now operate on COM3 (in this example).

2.2.2 Windows Vista

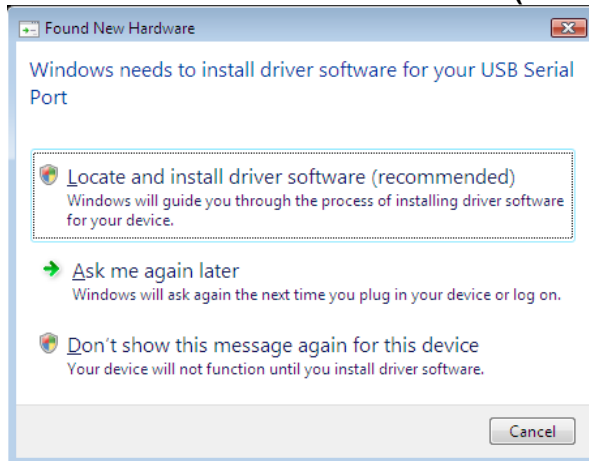


Attention:

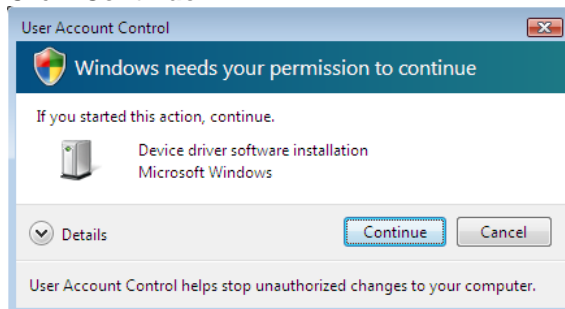
Unlike installation for Windows XP the installation proceeds in one single step: Wizard-guided installation of the driver for the converter and the serial port.

The installation will be repeated every time you plug in a new converter.

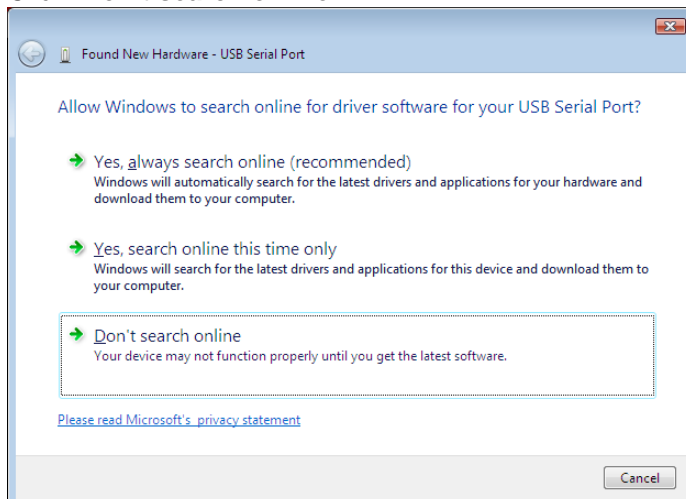
1. Plug the converter into the computer's USB port.
2. After a few seconds the wizard for installing new hardware pops up. Click **"Locate and install driver software (recommended)"**.



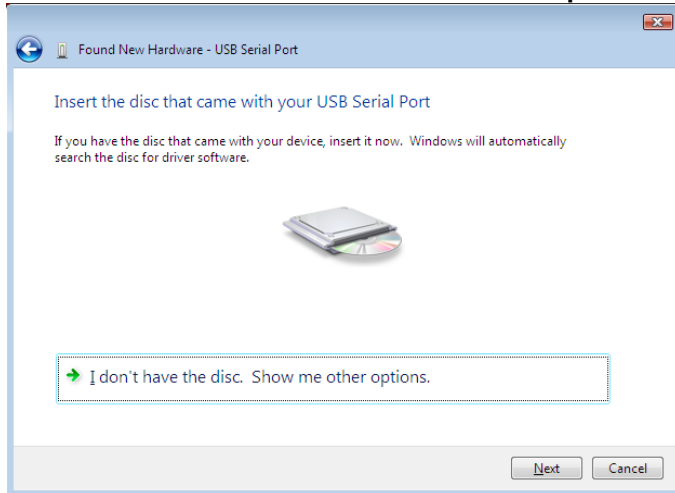
3. Click **"Continue"**.



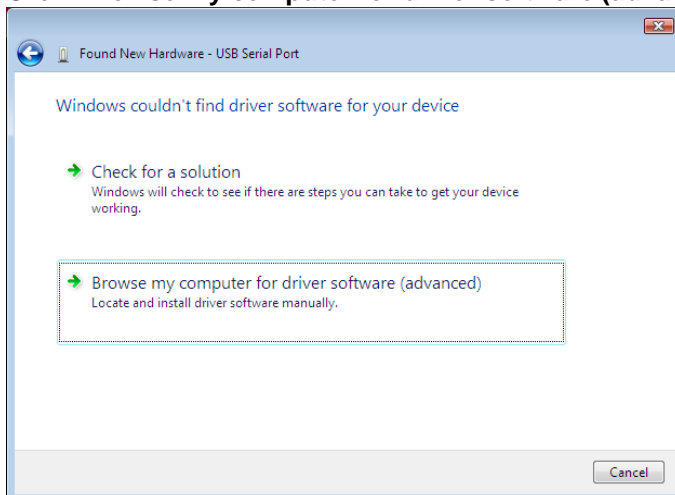
4. Click **"Don't search online"**.



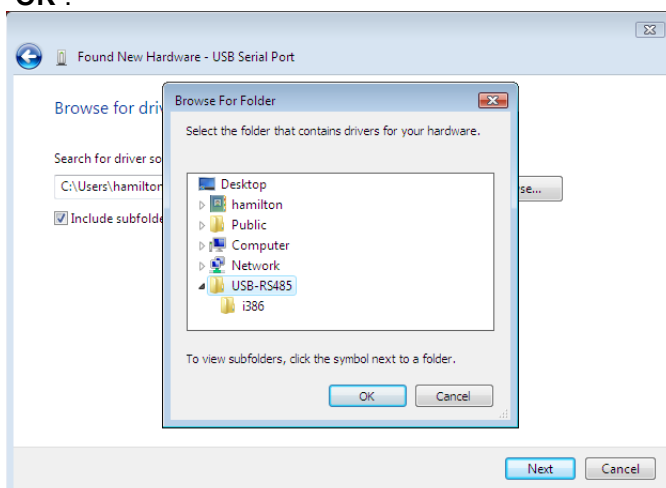
5. Click **"I don't have the disc. Show me other options."**



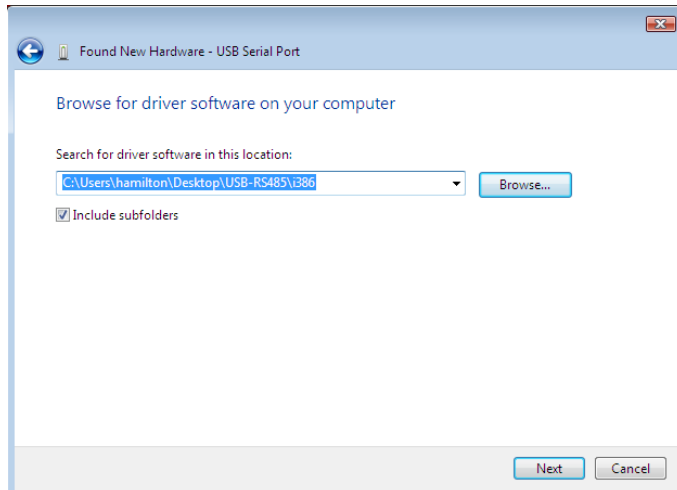
6. Click **"Browse my computer for driver software (advanced)"**.



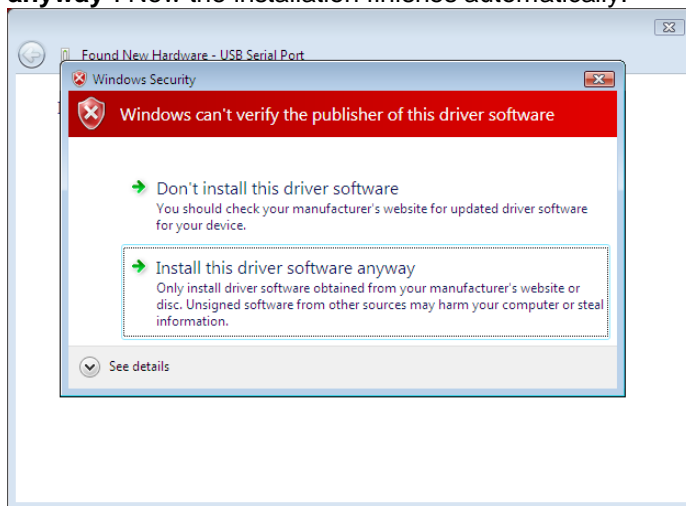
7. Browse the directories to locate the unzipped driver software and confirm your selection with **"OK"**.



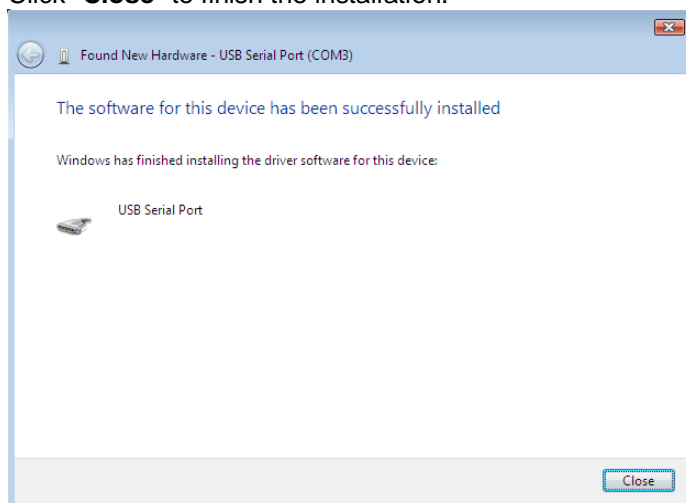
8. Click **“Next”**.



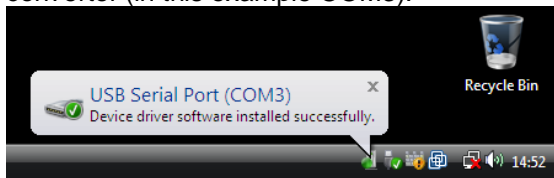
9. If a message appears about the certification of the driver, press **“Install this driver software anyway”**. Now the installation finishes automatically.



10. Click **“Close”** to finish the installation.

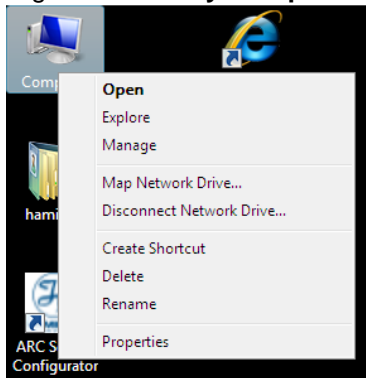


11. Windows Vista reports the number of the serial port assigned to the USB-RS485 Modbus converter (in this example COM3).

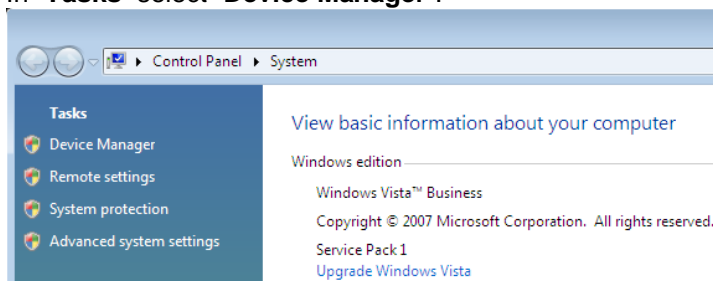


12. If you have missed the previous message you can find out the number of the COM-port as follows.

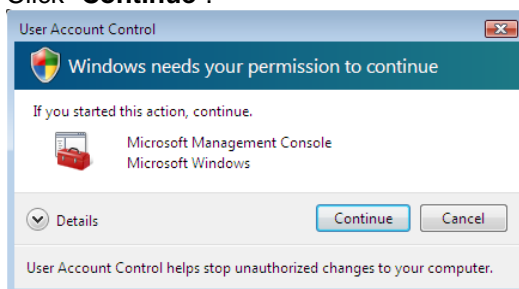
Right-click on **"My Computer"** and select **"Properties"**.



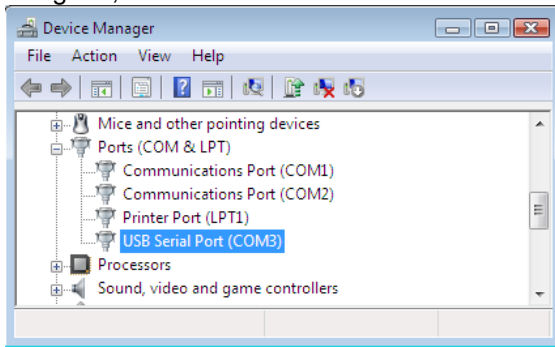
13. In **"Tasks"** select **"Device Manager"**.



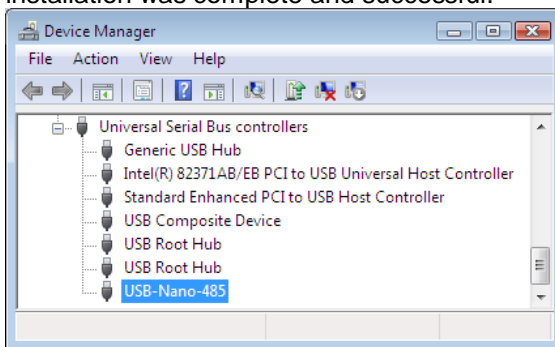
14. Click **"Continue"**.



15. **"Ports"** shows a new item named **"USB Serial Port (COMx)"**. x indicates the COM-port assigned, in this case COM3.



"Universal Serial Bus controllers" shows a new item named **"USB-Nano-485"**. If both items **"USB Serial Port"** and **"USB-Nano-485"** appear without any indication of failure, the installation was complete and successful.



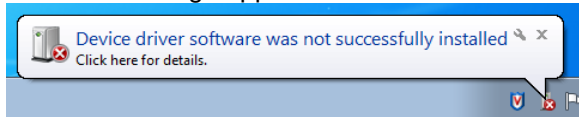
2.2.3 Windows 7



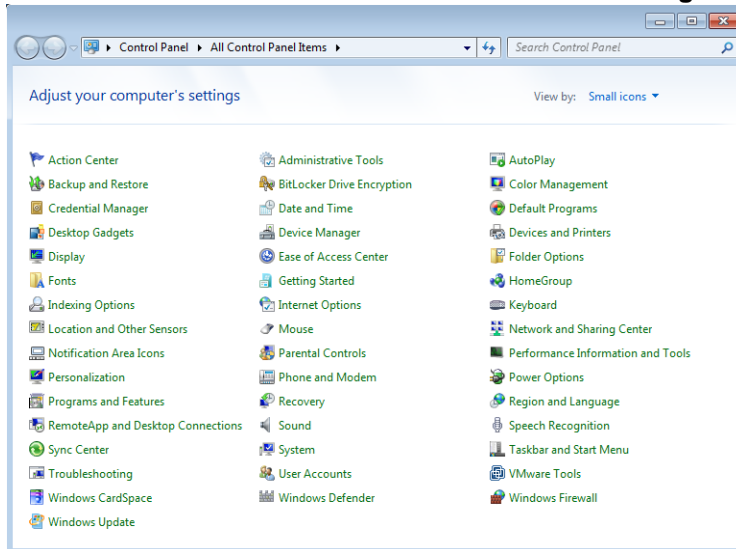
Attention:

Unlike installation for Windows XP and Vista the installation procedure described below is executed only the first time. If you plug in a new USB-RS485 Modbus converter you do not need to repeat the installation (see point 21).

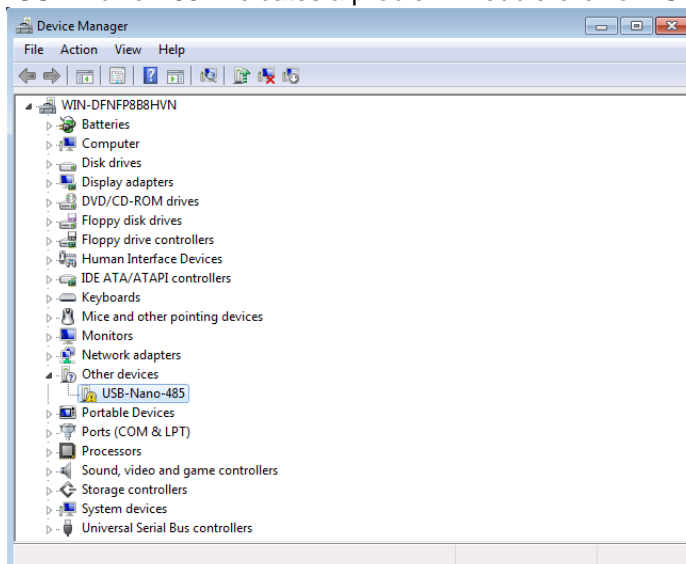
1. Plug the converter into the computer's USB port.
2. The PC will react in two different ways:
 - A wizard starts as described in chapter 2.2.2.
 - The wizard does not start and you have to follow the procedure as described below.
3. An error message appears:



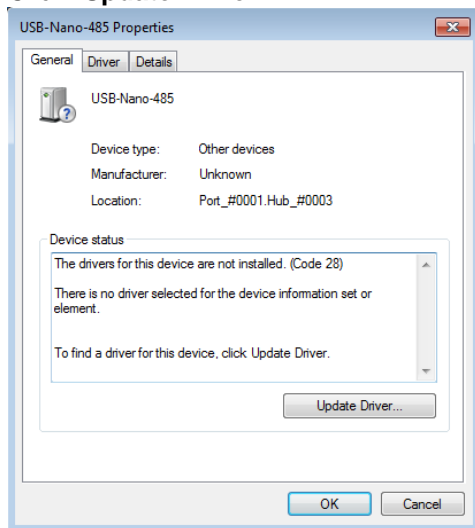
4. Click **“Start”** – **“Control Panel”** and select **“Device Manager”**.



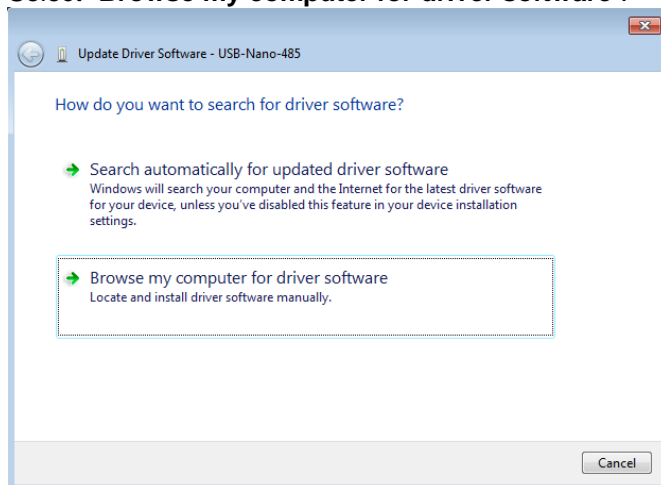
5. **“USB-Nano-485”** indicates a problem. Double-click on **“USB-Nano-485”**.



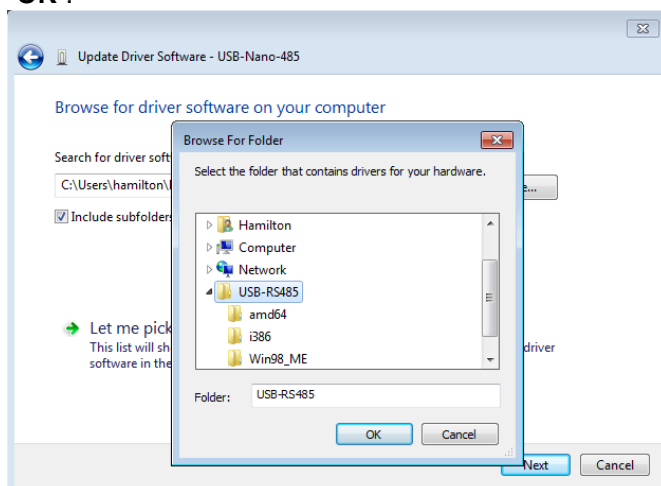
6. Click **“Update Driver ...”**.



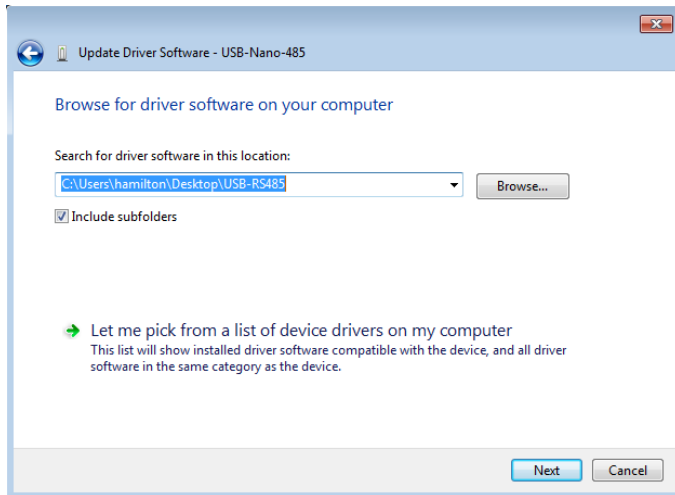
7. Select **“Browse my computer for driver software”**.



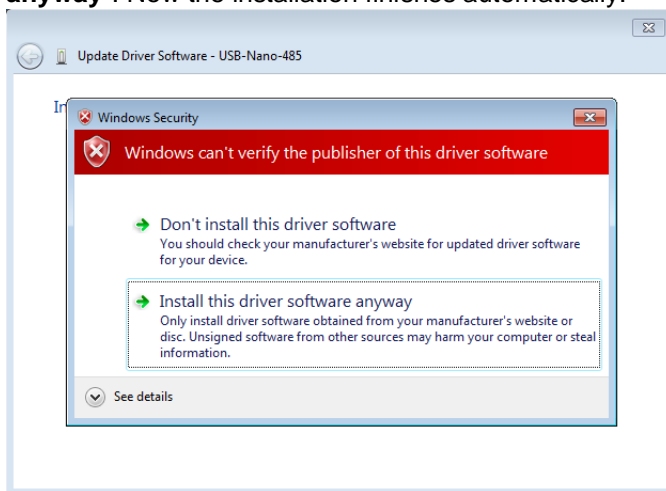
8. Browse the directories to locate the unzipped driver software and confirm your selection with **“OK”**.



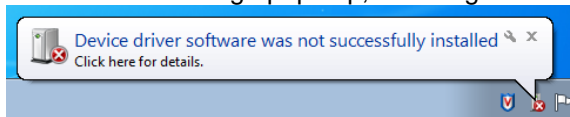
9. Click **“Next”**.



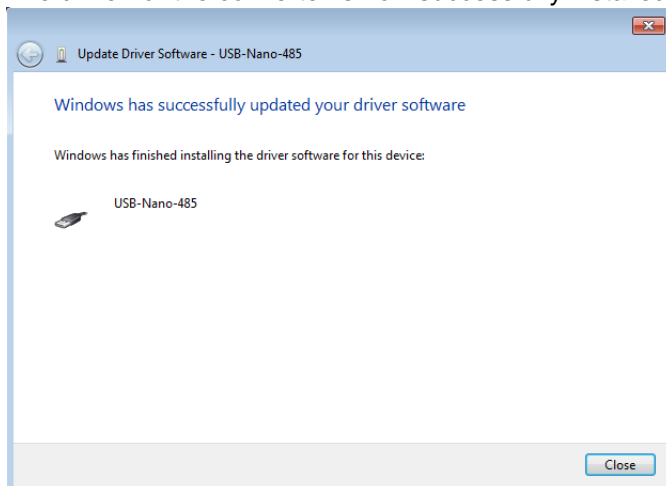
10. If a message appears about the certification of the driver, press **“Install this driver software anyway”**. Now the installation finishes automatically.



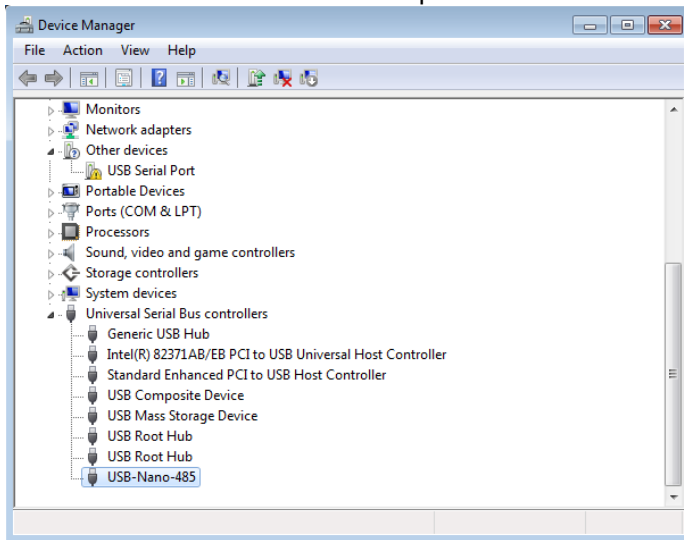
A new error message pops up, meaning another step is needed:



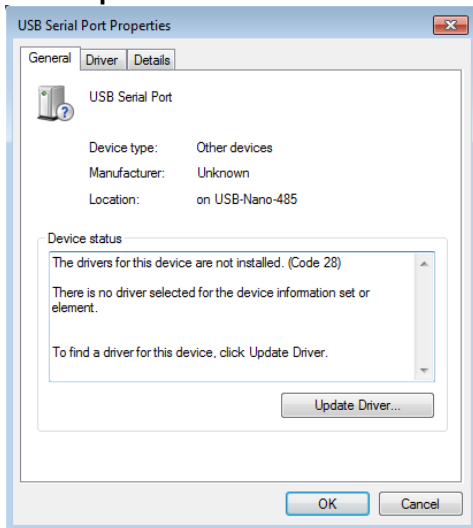
11. The driver for the converter is now successfully installed on your computer. Click **“Close”**.



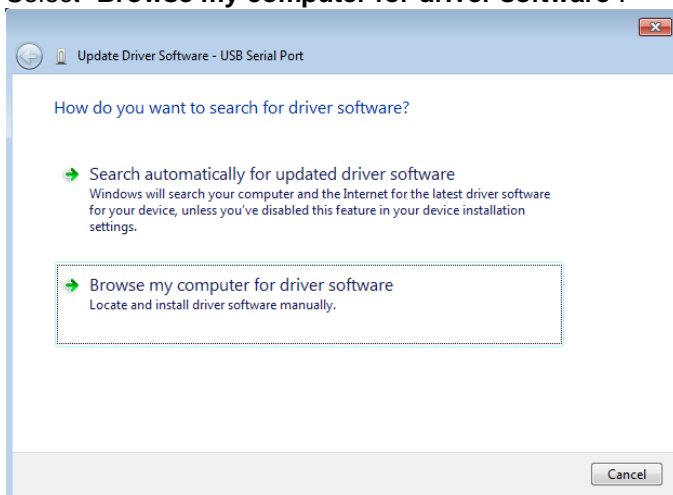
12. **“Close”** the Window **“USB-Nano-485 Properties”** (see point 6).
13. Now check in the **“Device Manager”** that **“USB-Nano-485”** converter has bin installed successfully.
“USB Serial Port” indicates now a problem. Double-click on **“USB Serial Port”**.



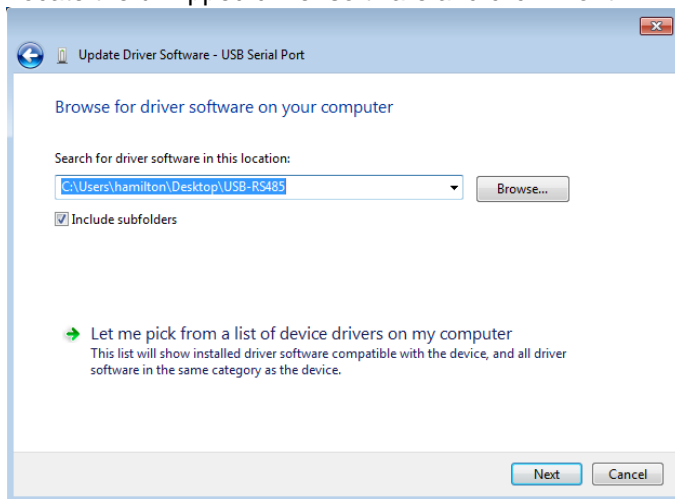
14. Click **“Update Driver ...”**.



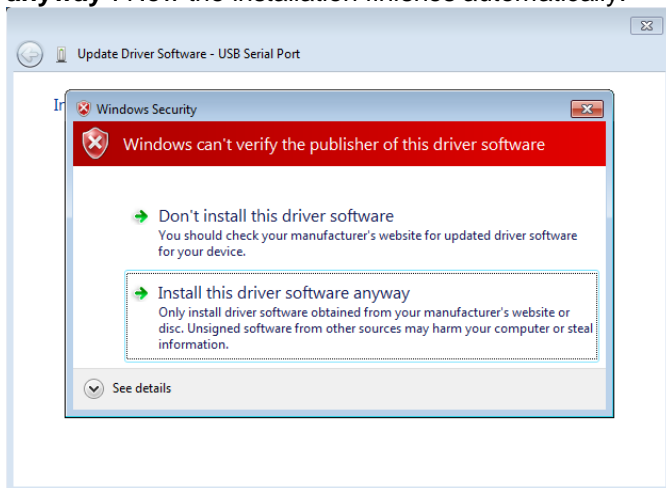
15. Select **“Browse my computer for driver software”**.



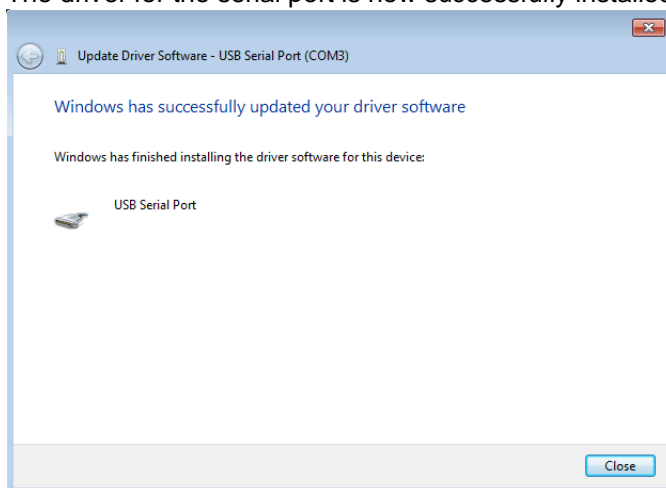
16. Locate the unzipped driver software and click **“Next”**.



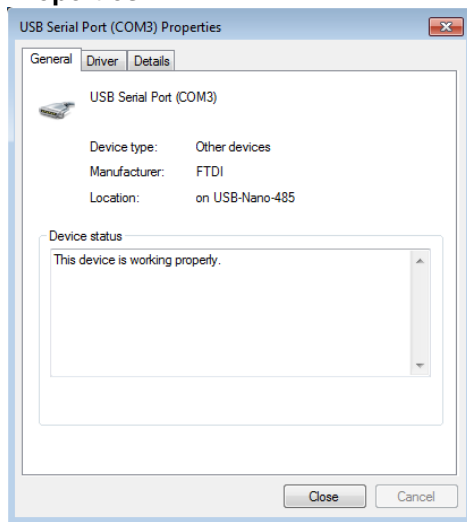
17. If a message appears about the certification of the driver, press **“Install this driver software anyway”**. Now the installation finishes automatically.



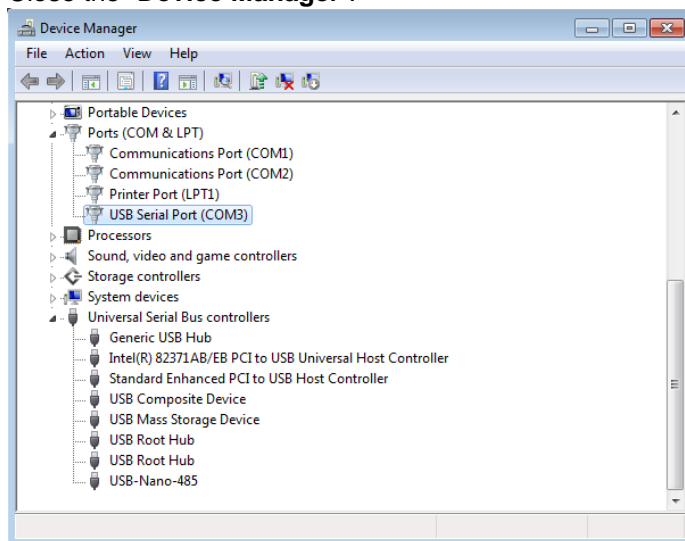
18. The driver for the serial port is now successfully installed on your computer. Click **“Close”**.



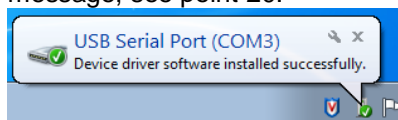
19. In this example the **"USB Serial Port"** is set to **"COM3"**. **"Close"** **"USB-Serial Port (COMx) Properties"**.



20. The driver-installation for the USB-RS485 Modbus converter has completed successfully, if both items **"USB Serial Port"** and **"USB-Nano-485"** appear without any indication of failure. Close the **"Device Manager"**.



21. If you plug an other USB-RS485 Modbus converter into the computer's USB port, you do not need to repeat the installation as this is done automatically. Windows 7 reports the number of the serial port assigned to the USB-RS485 Modbus converter. If you have missed the message, see point 20.



2.3 Uninstall USB-RS485 Modbus Converter Driver and unblock COM-Port



Attention:

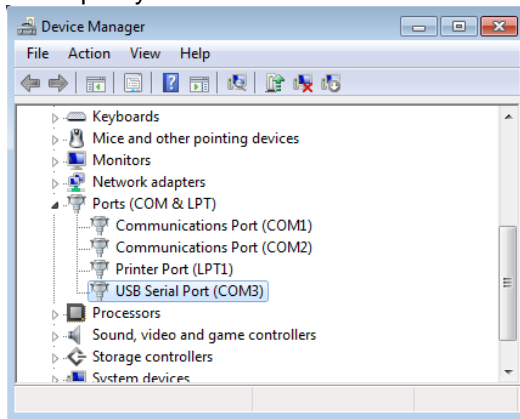
To uninstall, administrator rights are needed on your computer.

1. The USB-RS485 Modbus converter is plugged into the computer's USB port.
2. **Windows XP:**
Right click on **"My Computer"**. In the context menu displayed, select **"Properties"**. In the window **"System Properties"**, on the tab **"Hardware"**, click on **"Device Manager"**.

Windows Vista and Windows 7:

Click **"Start"** – **"Control Panel"** and select **"Device Manager"**.

3. Open the tree **"Ports (COM & LPT)"** and right click on **"USB Serial Port (COMx)"**. x = Number of the port you want to uninstall.



4. In the context menu displayed, select **"Uninstall"**.
5. **Windows XP:**
In the window **"Confirm Device Removal"**, confirm with **"OK"**.

Windows Vista and Windows 7:

In the window **"Confirm Device Removal"**, confirm with **"OK"**.

- 1) If you want to remove the driver completely select the field **"Delete the driver software for this device"**.
- 2) If you want to keep the driver installed and unblock the COM-port do not select the field **"Delete the driver software for this device"**. The advantage here is that a new USB-RS485 Modbus converter will be recognised automatically if plugged in.
6. The USB-RS485 Modbus converter is removed and the allocated COM-port is free for other uses.

HAMILTON Bonaduz AG
Via Crusch 8
CH-7402 Bonaduz
Switzerland

Tel. +41 81 660 60 60
Fax +41 81 660 60 70

contact@hamilton.ch
www.hamiltoncompany.com

July 2010
Manual P/N: 624325/00